

Heart of Indiana
United Way



ANNUAL REPORT
2022-23



Heart-to-Heart Connections:

Expanding Our Impact to Touch More Lives.



Dear Friends and Supporters,

On behalf of everyone at Heart of Indiana United Way, it is my utmost pleasure to present you this year's annual report and share with you the extraordinary impact we have achieved over the past year.

At Heart of Indiana United Way, our mission has always been to fight for the health, education and financial stability of every person. Our commitment to fostering stronger, healthier, and more vibrant communities remains unwavering. Each day, we strive to bring about positive change by connecting individuals, businesses, and agencies, pooling resources, and addressing the most pressing needs of our community.

This year, our theme, "Heart-to-Heart Connections: Expanding Our Impact to Touch More Lives," perfectly encapsulates our vision of creating lasting and meaningful connections that uplift and impact the lives of those we serve. By working together, we have been able to amplify our reach and extend our support to even more individuals and families across the Heart of Indiana.

Over the last year, we have expanded our programs into more communities to impact more lives. From supporting our children through a range of "Read and Achieve" efforts and helping families to achieve long-term financial stability through the THRIVE Network to addressing inequities in our communities and supporting safety-net services, our work continues to evolve to meet the needs of our community.

As we reflect on the past year at Heart of Indiana United Way, we must also acknowledge the financial challenges that have tested us. Economic uncertainty, rising costs, and a tough economy undoubtedly impacted us all, including many of our cherished donors and partners. In response, we have remained agile and resourceful. We understand the importance of financial stewardship, and our team has worked diligently to optimize our efforts, ensuring that every dollar is maximized to its fullest potential.

We are profoundly grateful to all those who, despite their own difficulties, continued to support our mission and vision during this challenging last year. Your unwavering dedication to making a difference in the Heart of Indiana region has been nothing short of remarkable. We firmly believe that with your continued support, we can overcome any obstacle and emerge stronger and more united than ever before. Your generosity, compassion, and dedication are the driving force behind our collective impact, and we are honored to have you by our side on this journey.

Thank you for being the heartbeat of Heart of Indiana United Way. Together, we will continue to create lasting heart-to-heart connections and expand our impact to touch more lives, even in the face of adversity.

With deepest gratitude,



President & CEO



Expanding Services, Supports, and Programs in 2023

As we reflect on the past year, Heart of Indiana United Way is proud to share the remarkable progress we have made in expanding our services, supports, and programs across our 5-county area. Through collaborative efforts and unwavering commitment, we have reached new milestones in our mission to strengthen communities and uplift lives.

THRIVE Network Expansion into Delaware County

One of the highlights of the past year was the expansion of the THRIVE Network into Delaware County. Expanding allowed us to extend vital support to even more individuals and families and help them on their path to a strong future. The THRIVE Network is an integral part of our mission to foster financial stability. With its successful implementation in Delaware County, we are confident in the positive impact it will have on the community.



New THRIVE Family Coaches at the Ross Center and Anderson Housing Authority



Earlier this year, we introduced THRIVE Family Coaches at the Ross Center in Muncie and the Anderson Housing Authority in Madison County. These impactful coaches play a pivotal role in assisting families facing challenges by offering guidance, resources, and personalized support. By integrating Family Coaches into our THRIVE Network, we have given local families the support they need to begin setting and reaching goals not just for themselves but for their children and their families as a whole.

Covering Kids and Families Expansion into Henry and Fayette County

Healthcare is a fundamental right, and Heart of Indiana United Way is committed to ensuring every family has access to essential medical coverage. In July, we expanded Covering Kids and Families into Henry and Fayette counties, furthering our reach to support families without insurance. With the dedicated efforts of our new staff member, Mary Nicholson Tait, we will be able to connect even more families with the insurance they need to safeguard their health and well-being.



Enriching More Young Minds: Summer Book Give Away and Blast Off to Kindergarten events



Education lies at the heart of our impact efforts, and by hosting more Summer Book Give Aways and bringing back Blast Off to Kindergarten events, we have successfully enriched more young minds in Madison and Delaware counties. By providing children with books and educational resources, we are fostering a love for reading

and setting the stage for a brighter future for the next generation.

Expanding Dolly Parton's Imagination Library



Dolly Parton's Imagination Library is a cherished program—fostering a love of reading. Monthly, free age-appropriate books are delivered to young children's doorsteps. Heart of Indiana United Way has led this program in several of our counties for a number of years. Thanks to generous grant funding from CenterPoint and new funding from the State of Indiana, we have been able to extend the reach of this program to all five counties we serve, bringing the joy of reading and learning to even more children in our communities. This year will mark the first year that Dolly Parton's Imagination Library will become available in Fayette County.

Operation Weatherization Spreads Its Wings Across All 5 Counties

Thanks to a generous grant from CenterPoint, this past year, we were able to expand Operation Weatherization across all five counties.

Through this program, we help reduce energy costs, prevent potential health problems, and help keep our neighbors on track to meet their basic needs. Clients receive a free box of do-it-yourself weatherization supplies that are packed and delivered by volunteers during the month of November helping them to stay warm during the coldest months of winter.



Operation Weatherization

New United Way Offices in Winchester and Connersville

Thanks to grant funding, Heart of Indiana United Way expanded our physical presence in two communities: Winchester in Randolph County and Connersville in Fayette County. Local offices give staff a place to serve people as we aim to gain a deeper understanding of the unique needs and challenges faced by each community. Our team works hand-in-hand with local organizations, leaders, and volunteers to identify areas where we can make a meaningful impact. By forging partnerships and fostering collaboration, we maximize the impact of our initiatives and empower individuals to create better futures for themselves and their communities.



Together, We Thrive

Heart of Indiana United Way is incredibly grateful for the support and collaboration from our communities, donors, and volunteers. Together, we have made substantial strides in expanding our services, supports, and programs to uplift lives and build stronger communities. As we look to the future, we remain steadfast in our commitment to creating lasting, positive change in the lives of those we serve.

To learn more about our initiatives and how you can get involved, please visit our website heartofindiana.org. Together, we can continue to make a difference in the lives of countless individuals and families throughout our region. Thank you for being a part of this journey with us.



New initiative: the Equity Advancement Fund

EQUITY ADVANCEMENT FUND



Heart of Indiana United Way proudly presents its new initiative, the Equity Advancement Fund. Created in partnership with local Community Foundations serving Delaware, Henry, Madison, South Madison and Randolph counties, the new Equity Advancement Fund aims to support diverse programs to help strengthen and advance equity and belonging locally.

“These are programs working on the front lines to serve our minority communities, LGBTQ+ individuals, those with disabilities, non-English speaking, multi-lingual speakers and so many more.

Many of these programs are grassroots, volunteer-directed, and very impactful but challenged by our current application process.”

Jenni Marsh, President and CEO of Heart of Indiana United Way.

“In looking at the organizations we have historically funded, we found a lack of grant applications from programs led by or serving the underrepresented and under-resourced in our community,” said Jenni Marsh, President and CEO of Heart of Indiana United Way.

These findings drove Heart of Indiana United Way to explore the creation of an Equity Advancement Fund and to reach out to Community Foundations as partners in the effort. The goal was to create an entry-level grants opportunity to help small, grass-roots organizations that are led by or serve underrepresented communities to easily enter the granting process and build relationships for future funding and capacity-building opportunities.

As part of the new fund’s launch, local community foundations provided \$13,000 in matching dollars to encourage donors to give and maximize the dollars available for equity advancement fund mini-grants. Thanks to a generous donation by Unified Group Services, the full match has already been realized!

“The more we can raise to support the fund, the more that will be available for local grants. This is a wonderful opportunity for individuals and businesses to support an effort dedicated to addressing the disparities in community needs,” shared Kim Williams, VP of Resource Development and Marketing for Heart of Indiana United Way. “We anticipate opening a rolling grants cycle in the next few months, once the grant application and funding process is finalized”

IN 2022, WE BROUGHT TOGETHER OVER

3,350 donors

FROM ACROSS OUR FOOTPRINT INCLUDING

79 workplaces in
five counties

TO RAISE

1.9 MILLION dollars

TO PROVIDE GRANT AND OTHER FUNDING
TO HELP OVER

16,707 individuals & families

AND

36 funded partners

WITH THE FINANCIAL SUPPORT NEEDED TO
IMPACT LIVES AND CREATE THRIVING FUTURES



EDUCATION

READ & ACHIEVE PROGRAMMING

GOAL:

Ensuring that children start school ready to learn and are reading on grade level by the end of 3rd grade.

\$525,000
IN FUNDING INVESTED

2022-23 PARTNERS IN THE WORK:

- Blast Off to Kindergarten
- Boys & Girls Club of Muncie
- Dolly Parton's Imagination Library
- HOPE Henry County Child Care Network
- Huffer Memorial Children's Center
- Motivate Our Minds
- Muncie BY5
- Muncie P3
- South Meridian Church of God
- Summer Book Giveaway
- United Day Care
- YMCA of Muncie

FINANCIAL STABILITY

THE THRIVE NETWORK

GOAL:

Help financially struggling families to move from living paycheck to paycheck to long-term financial stability.

\$612,000
IN FUNDING INVESTED

2022-23 PARTNERS IN THE WORK:

- A Better Way
- Alternatives, Inc.
- Anderson Housing Authority
- Anderson Impact Center
- Christian Ministries
- Firefly Children & Family Alliance
- Grace Horizon
- Madison Park Church
- Open Door Health Services
- PathStone Corp.
- Project Leadership
- Ross Center
- Second Harvest Food Bank
- YWCA of Central Indiana

SAFETY NET SUPPORTS

FOOD, SHELTER, UTILITIES, CHILDCARE & MORE

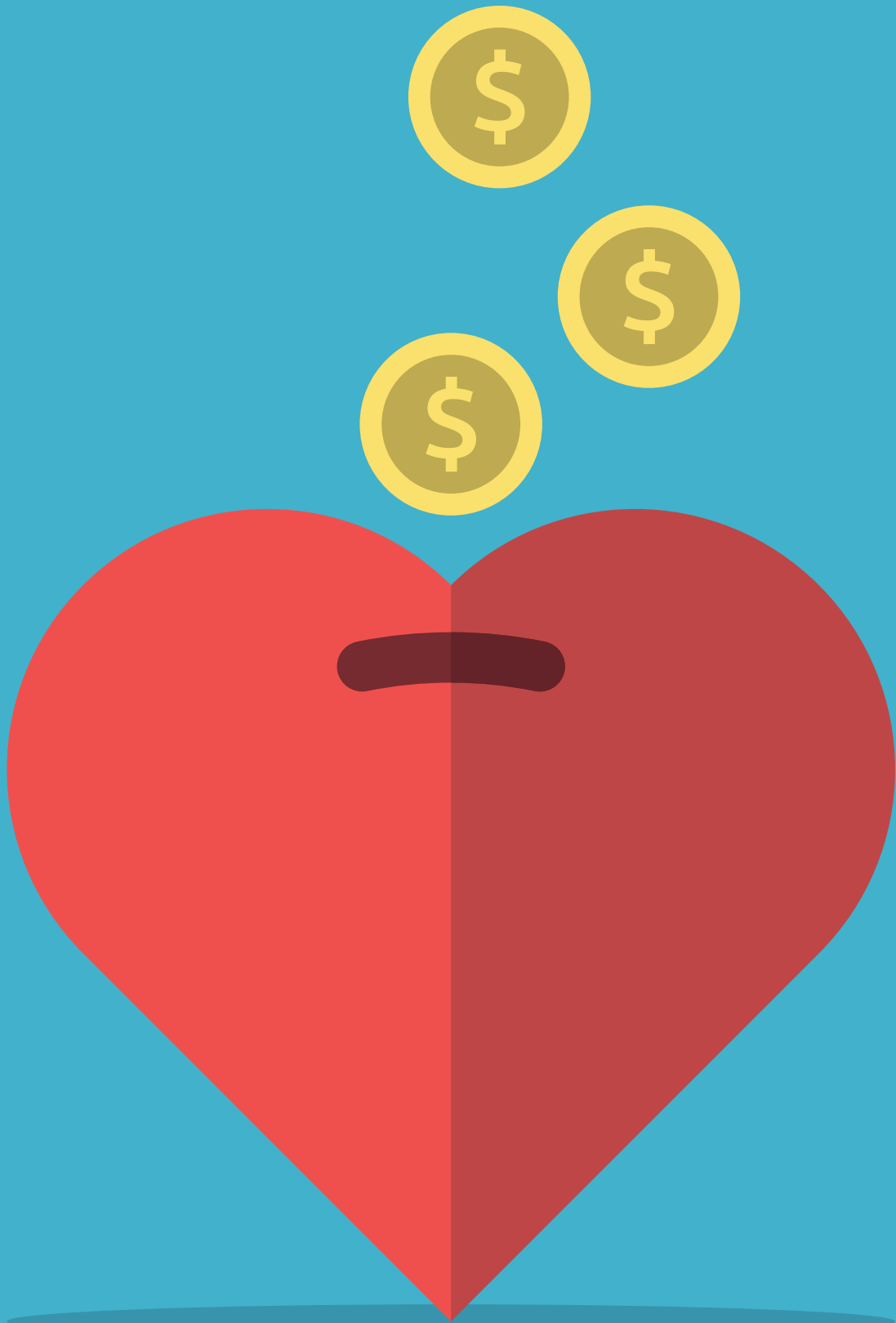
GOAL:

Work with community partners to help families in crisis meet basic needs like food, shelter, rent, childcare and utilities.

\$424,000
IN FUNDING INVESTED

2022-23 PARTNERS IN THE WORK:

- A Better Way
- Alternatives
- Anderson Housing Authority
- Bowen Center
- Delaware County CASA
- Delaware County Family Recovery Court
- Fayette County Community Voices
- Friend to Friend Utility Assistance
- Home Savers of Delaware County
- House of Ruth
- Inside Out Community Development
- Little Red Door Cancer Agency
- Meals on Wheels
- Muncie Mission
- Muncie OUTreach
- Open Door Health Services
- Operation Love Ministries
- PathStone Corp.
- Salvation Army - Madison County
- Second Harvest Food Bank
- St. Vincent De Paul
- YWCA of Central Indiana



Cost-Effective Philanthropy: Making a Big Impact with Smart Giving

While the spirit of giving knows no bounds, we understand the importance of maximizing the impact of your donations. Here are some cost-effective ways to donate and strategies for giving that can ensure that every dollar you give goes even further to create lasting change.

Payroll Deduction

Small Contributions, Lasting Impact

One of the most convenient and impactful ways to donate is through payroll deduction programs. This approach allows you to make regular contributions directly from your paycheck. While each individual donation may seem small, the collective effect of continuous giving from employees can significantly boost our capacity to serve the community. Moreover, payroll deductions are hassle-free, requiring minimal effort from donors and streamlining the donation process.

Donor-Advised Funds (DAFs)

Strategic Philanthropy

Donor-Advised Funds provide donors with a flexible and strategic approach to giving. By contributing to a DAF account, you can claim an immediate tax deduction, while having the freedom to recommend distributions to Heart of Indiana United Way over time. This allows donors to carefully plan their giving and potentially grow their donations through prudent investments, leading to even greater support for the causes that matter most to them.

Qualified Charitable Distributions (QCDs)

Tax-Free IRA Donations

For individuals aged 70½ or older, Qualified Charitable Distributions offer a unique tax benefit. QCDs allow you to donate directly from your Traditional IRA to a qualified charity, including organizations like Heart of Indiana United Way, up to a certain limit. These donations count towards your required minimum distribution and are not included in your taxable income, providing a tax-efficient way to support charitable causes.

Matching Gift Programs

Amplifying Impact

Many employers offer matching gift programs, where they match their employees' charitable contributions. Taking advantage of these programs effectively doubles the impact of your donation. Check with your human resources department to see if your company offers such a program, and maximize your giving by participating in it.

Appreciated Asset Donations

Avoiding Capital Gains Tax

Donating appreciated assets, such as stocks, mutual funds, or real estate, directly to a charitable organization can offer significant tax benefits. By doing so, you can avoid paying capital gains tax on the appreciation of the asset. Furthermore, you can claim a deduction for the fair market value of the asset at the time of the donation, which may be higher than your original investment.

Corporate Donations

Business Tax Deductions

For business owners, charitable donations made by a corporation can be tax-deductible expenses. Companies can deduct qualified contributions up to a certain limit, which can positively impact the company's bottom line while supporting meaningful causes in the community.

Estate Tax Planning

Reducing Estate Tax Liability

Charitable giving can play a pivotal role in estate planning. By designating a portion of your estate to a charitable cause through bequests or beneficiary designations, you can reduce the taxable value of your estate. This can potentially lower estate tax liabilities and allow more of your assets to go towards the causes you care about.

HEART OF INDIANA UNITED WAY FISCAL YEAR 2021-2022 FINANCIAL STATEMENT

Independent Auditor's Report prepared by
Whiting & Company, Certified Public Accountants.

June 30, 2022

CURRENT ASSETS

2022

Cash and cash equivalents	\$413,749
Pledges receivable, net of allowance for uncollectible pledges of \$485,769	363,625
Out-of-area receivables.....	117,136
Spendable balance of beneficial interest receivable	34,528
Due from U.S. Treasury, federal employee retention credit	129,706
Accrued interest	388
Prepaid expense	39,190
Total Current Assets	\$1,098,322

PROPERTY AND EQUIPMENT

Land and improvements	\$23,493
Building and improvements	117,287
Furniture and fixtures.....	116,965
	257,745
Less accumulated depreciation.....	(121,005)
Total Property and Equipment, Net	\$136,740

OTHER ASSETS

Cash and cash equivalents, held for long-term purposes	\$282,998
Investments.....	3,039,716
Beneficial interest in assets held by foundations	884,235
Total Other Assets.....	\$4,206,949

Total Assets **\$5,442,011**

CURRENT LIABILITIES

Accounts payable.....	\$3,405
Allocations payable.....	1,177,061
Out-of-area payables.....	218,093
Designations payable	179,152
Accrued wages and payroll liabilities	16,136
Accrued vacation	37,621
Accrued expenses.....	2,450
Total Current Liabilities	\$1,633,918

Total Liabilities..... **\$1,633,918**

NET ASSETS

Without donor restrictions	
Undesignated.....	\$1,571,916
Designated by board for quasi-endowment	950,000
	2,521,916
With donor restrictions	
Subject to purpose and time restrictions	\$401,942
Perpetual in nature	884,235
	1,286,177

Total Net Assets **\$3,808,093**

Total Liabilities and Net Assets..... **\$5,442,011**

2022 DONORS, PARTNERS, SPONSORS & VOLUNTEERS

We wish to thank and acknowledge all our donors for your generous support. If you are a leadership donor and we have omitted your name, or made an error with how it is printed, please contact us our office at 765-288-5586 so that we can correct our error in future publications.

Tocqueville Society

The Tocqueville Society recognizes local philanthropic leaders and volunteers that give \$10,000 or more who have devoted their time, talent, and funds to create long-lasting community changes

Stefan and Joan Anderson
Anonymous
In memory of Tim Linegar and in honor of the extraordinary work of the employees of New Castle Stainless Plate
Jane Botts
Ken and Peggy Briner
Ron and Cheryl Fauquher
Dave and Deb Heeter
Marilyn A. Nathan
John and Jane Pidgeon
Patricia Schaefer
Charles V. and Claudia B. Sursa

Heart of Gold \$5,000 - \$9,999

Jim and Marilyn Ault
Jim and Debbie Brown
Craig and Marsha Dunkin
David and Keri Happe
Mr. Robert Kersey
David and Linda McGalliard
Geoff and Jennifer Mearns
Nancy Millard
Dave and Beth Tharp
Kenneth E. and Ann M. Wiley
Mary Lou Vercellotti and Nik Seiber

Giving Heart \$2,500 - \$4,999

Doug and Kay Bales
Dr. Treva L. Bostic
Ralph and Elizabeth Bremigan
Gary and Jill Cameron
Michael D. Chandler
Rufus C. and Marci L. Cochran
Chris and Julia Crabtree
Linn and Susan Crull
Wil and Cindy Davis
Dan and Karen Dykes
Ronald and Kelly Flick
Jennifer Gibson
Tom Hamer
In memory of Stephen Hamer
Mark & Cathy Hardwick
Jason & Stacey Harrington
Jackie A. Johnson and grandchildren - Kinley Parker, Silas, and J'Micah
Eric and Sandra Kelly
Rebekah Snyder Logan
Jenni and John Marsh
Jon and Nancy Moll
Darlene Pease
Sherry Sidwell
Casey and Jennifer Stanley Family

Leaders Heart \$1,000 - \$2,499

Jim Abbott
Steve and Mary Avila
Bryan Ayars
Steve and Tina Baker
Tom and Jessica Bannon
Max Barnhart
Adam R. Beach
James and Laurie Beamish
Seth Beckman
Todd Berendji
Jeff and Sue Bird

Paula Bivens
Mark Boehmer
Stephen D. Brand
Juanita Bruns
Nancy B. Carlson
Angela and Tom Cassidy
Joseph and Barbara Clark
Teresa and Sam Clemmons
Dr. Andrew H. Combs
Jonathan Cook
Dave and Judy Costill
Laura Crampton
Tom and Carol Cukrowicz
Steven Curd
Paige Dooley
Trent and Dr. Karen Dowling
Jennifer Dudley
Kevin and Elizabeth Eads
Elizabeth Jared and John Emert
Jim and Kim Evans
Sali Falling and Loren Malm
Chris and Melanie Fancher
David and Lisa Ferguson
Stephan Fluhler
Kevin Gatzlaff
Kevin W. Gerrity
Chuck Gin
Gregory V. Gooding
Suzanne Gresham
Jim and Coral Hackleman
Dave and Tammy Hahn
James Hanson
George Hawes
Jeff and Kelly Heavilon
Karen L. Hemberger
Tom and Julia Hemeyer
Pete & Kelli Heuer
James and Gene Hoban
Sandra Hudson
Lora Jones- McClure
Brad and Denise King
Thomas and Nancee Kinghorn
Joseph L Kirkpatrick
Mary E. Kite
Amanda R. Knerr
Kimberly Kuznik

Robert G. La France
Jeff and Beth Lang
George and Nancy Likens
James and Joy Lowe
Paula Luff
Laure Maclin
John and Dee Martin
Jay Matchett, MD
Dr. J. Mark Mayer and family
Maureen McCarthy
Randy McCracken
Joann and Mark McKinney
Laura Means
Stephanie and Robert Metz
Juli and John Metzger
Fred A. Meyer Jr.
Don and Carolann Mikesell
Matt and Deb Miller
Phil and Holly Miller
Deborah M. Mix
Tim and Sheryl Monnier
Steve and Shawn Moore
Jay Moorman
Rich Mousty
Jim and Linda Needham
Bill and Carol Nyberg
Don and Claire Park
Dr. Paul W. and Nancy K. Parkison
Jeff and Jennifer Parsons
Terry and Rebecca Pence
David and Linda Perkins
John Pistole
Bill and Beverley Pitts
Donna Polcz, Realtor
Sherry Riggan
Terri Rinker
Judith B. Roepke
Ro-Anne Royer Engle and Randy Engle
Melissa Rubrecht
Daniel and Marilyn Sager
Mr. and Mrs. Steve Selby
The Shelley Family
Christopher Sherck
Brian and Hilary Slick
Dean and Karen Smith
Andy & Jane Smith
James W. Smith
Bob and Marilyn Smitson
Lynne and Daniel Stallings
John Starnes
Kate Stoss



Stephanie Talley
Paaige K. Turner
Dr. & Mrs. Ross Van Ness
Kevin S. Ward
Steve and Lynn Warner
Gail Werner
Donald and Sue Whitaker
James Whitaker
James R. Williams
Kimberly Williams
Chet and Sandra Williams
Erin Wire
Brad Wise
Kevin and Jennifer Woehler
Todd & Jenny Yarbrough
D. Scott and Jennifer Zelhart
Kendall and Judy Zinszer

Rising Heart \$500 - \$999

Beth Alexander
Joan Andrews
Homand and Rachel Bahrami
Rick A. Bantz
John and Nancy Barclay
Tammie Barnes
Allen and Barbara Beaty
Kevin and Cindy Beisser
William Betts
Belinda Bollman
Rhonda Bost
Cathy Brammer
Pam Brelage
Dr. Betty J. Brown
Tom and Marlyne Bruce
Marie Burkey
Teresa Butler
Abby Butler
Kelly Buzan
Carl and Carolyn Caldwell
Kim Campbell
Antha and Brad Childes
Lorie Clevenger
Nathan Coe
Gena and John Coers
Jeffrey Cook
Jeff and Lynn Culp
Chris Dacosta
Ken DelaBastide
Jack & Patty Demaree
Sean Dennis
Bradley Derome
Jennifer Desilva
John J. Donohue
Mark and Christine Dudley
Lisa Eckerty
Don & Peggy Eckstein
Judy Ellingwood
Michael Elliott
Martin Erschen
Gary and Beth Erskine
Megan Fairchild
Amber Fithian
Betsy Fitzgerald
Sandra Franklin
Tom and Rosemary Frazier
James Gahimer
In memory of Richard May
Mary Ann Gamache
Darlene Garrison
Kari Gayes

Mike Gillilan and
Lesley Scott-Gillilan
Evelyn Goode
Craig and Molly Graybeal
Scott Green
Mark and Traci Greenberg
David Gregory
Warren Groeling
Judith Hall
Duke Hamm
Tom and Jean Harbron
Ann Hardacre
Kelsey Harrington
Brian Haughn
C.S. Hendershot
Duane Hoak
Michele Dawn Hockwalt
Carrie Holley
Debra Hollon
Brian and Sherry Holtzclaw
Morgan & Spencer Howard
Scott and Amy Huntsman
Steve and Rebekah Ireland
Blake and Trish Janutolo
Marci Jester
Steve and Kariann Jobe
Samantha Jones
Brenda Jordan
Dan and Teresa Joyce
Steve Keaton
Philip Kinley
Owen LaChat
David C. LeBlanc
Catherine Light
Herbert and Darlene Likens
Richard Maloney
Tracie Marling
Anand Marri
Kathy McCauliff
Dennis McCord
Mickelle McCoy
Gordon Mcllwain
Ron and Sharon McNabney
Brian Means
Jody Michel
Hank and Terri Milius
William Miller and
Annemarie Voss
Roger Miller
Kevin Moloney
Richard B. Moore
Steve and Shawn Moore
Stephanie and Mike Moran
Dixie Mullins
Adrienne Newman
Sherri Nial
Lisa Noble
Laura O'Hara
Karrie Osborne
Tom Overleese
Ms. Ann M. Parsons
Karen Pavy
Trent and Sarah Paxson
Brian Petty
Jayden Pfleeger
Jean Marie Place
Alison Quirk
Brian Reed
Cathy Reels
Michael Riddle
Dan and Sherry Ridenour
Ian Robertson
Kim Rogers-Hatfield
and Steve Hatfield

Scott Edward Rutledge
Darla and Gary Sallee
Beverly Joyce
Carol E. Seals
Gregory and Candy Shannon
Rich and Donna Sharp
Paula Simmons
Stephanie Simon-Dack
Missy Simpson
Ruthie Smith
Elaine Smith
Obadiah Smith
Randy and Cindy Sollars
Desiree Soptelean
Rich and Sheila Spisak
Andrea Stafford
Bernie and Annette
Staggenburg
Angela Stefanski
Pamela Storm
Lauren Stutz
William and Cheryl Surbaugh
In memory of Richard May
Ashley Surpas
John Sutton
Ross and Natalie Swallow
Marla Templeton and
Keith Greenwalt
Julie Terhune
Stacy Terhune
Preston Tollett
Doug and Valerie Townsend
Keith and Mary Trent
Dwight Trueblood
Nancy and Steve Vaughan
Laura Vise
Terry and Cheryl Walker
Betsy Welsh
Larry Wesley
Dr. James and Mrs.
Judy Wessar
Shelly Weston
Lisa Whitehead
Jay and Stephanie Wilson
Mikah Wilson
Rob Wirt
Tony and Amy Yakos

Our Top 20 Corporate partners are highlighted on the back page of this report. Additional corporate partners are listed below.

ADDITIONAL CORPORATE PARTNERS

3 Rivers Credit Union
A Better Way Services, Inc.
ADP
Advanced Dental Care of
Anderson
Alexandria Community
Schools
Alice Heck Trust
Alternatives, Inc.
Amacor - Advanced
Magnesium Alloys Corp.
American Hydro LLC
Anderson Madison County
Visitors Bureau
Anderson Public Library
Anderson University

Ascension St. Vincent
Anderson
Athletico Management, LLC
Ball Associates
Bankable
Becky's Happy Mule Cafe
Boys and Girls Clubs
of Muncie
Cardinal CPAs
CarDon & Associates
Carter Express
CenterPoint Energy
Central High School
Chamber of Commerce/DAC
City of Muncie
City of Muncie Civil
Employees
City of Muncie Fire and Police
Cobalt Civil
Comcast
Comcast Business Class
Community Hospital Medical Staff
Concreo Partners, LLC
Cultured Urban Winery
Dana Corp
David and MaryJane Sursa
Trust Fund
DeFur Voran LLP
Delaware County Employees
Destiny Christian Center
International
Donahue Gas, Inc.
Draper Shade and Screen
Dub and Nancy Fike Fund
Duke Energy Foundation
E & B Paving Company, Inc.
Eli Lilly and Company
Elwood Community Schools
Emma Milbourne Trust
Exelon Foundation
Firefly Children & Family
Alliance
First Farmer's Bank & Trust
Frankton - Lapel Community
Schools
Fredericks, Inc.
G & G Oil Company Inc.
Gaither Management Group
George Insurance Group
George M. Lee Memorial
Fund
Greenville Technology,
Inc - Anderson
GVC Mortgage, Inc.
Henry Community
Health-Hospital
Henry County Community
Foundation, Inc.
Henry County REMC
Herald Bulletin
Indiana American Water
Indiana National Guard
Indiana Title Insurance Co.
Ivy Tech Madison Region
JAM Printing
Jane Pauley Community
Health Center
K. R. Montgomery &
Associates
Keg-N-Bottle, Inc.
Kendon
Longfellow Elementary
School
Madison County Community
Foundation
Madison County Federal
Credit Union
Meijer
Meridian Health Services
Minnetrissa Cultural Center
MRS Heating and Cooling
Muncie Community

Schools
Muncie Power Products
Muncie Schools
Administration
Navient Solutions, Inc.
New Castle Stainless Plate
Normandy Flower Shop
NTN Driveshaft Anderson
Ontario Systems, LLC
Pizza King
PNC
Poet Biorefining
Prairie Farms Dairy
Progress Rail - Caterpillar
Red Gold, Inc.
Reflectix, Inc.
Remax - Nick Rodgers
Rowland Title Company
Sansberry Dickmann
Freeman Buita & Cook
Second Harvest Food Bank
South Madison School
Corporation
STAR Financial Bank
Steve and Tanya Alford
Family Foundation
Stifel Nicolaus
The Cummins Foundation
The Edge
Vectren/Centerpoint
Energy
West Electric
West View Elementary
School
WoofBoom Radio
YWCA

EVENT & MATCH SPONSORS

**Day of Action
Delaware County**
AEP Foundation

**Day of Caring
Henry County**
Henry Community Health

**Equity Advancement
Fund Match Sponsor**
Community Foundation of
Muncie & Delaware County
Community Foundation of
Randolph County
Henry County Community
Foundation
Madison County
Community Foundation
South Madison
Community Foundation

**Heart of Indiana United
Way/Madison County
Chamber Golf Classic**
Presenting Sponsor,
Community Hospital
Anderson

**Heart of Indiana United
Way Event Sponsor**
City of Muncie

Operation Weatherization
CenterPoint - Presenting
Sponsor
Reflectix

VOLUNTEERS

Campaign Volunteers

WaTasha Barnes Griffin
Emily Blue
Greg Bramwell
Trent Dowling
Alison Flores
Jennifer Gibson
Melissa Greer
Duke Hamm
Tamara Humphries
Jon Madison
Melinda Messimeo
Abby Shores
Obadiah Smith
Beth Tharp

Data Action Council

Dea Bell
Jonathon Cook
Scott Deetz
Kelsey Harrington
Tony Harvey
Duane Hoak
Anna Park
Sue Patton
Susan Rivera-Mills
Clayton Whitson

Communications and Awareness Building Action Council

Mark Boehmer
Angela Cassidy
Jaqueline Hanoman
Bekah Snyder Logan
Mary Nicholson Tait
Shauna Reynolds
Rachel Thompson
Nancy Vaughan
Ren'a Wagner

Fundraising and Grantmaking Action Council

Nancy Anderson
Marilynn Collier
Charlize Jamieson
Matt Kelsey
Melinda Messino
Jon Moll
Darla Sallee
Kevin Wohler

Community Mobilization and Engagement Action Council

Treva Bostic
Fay Dansby
Wayne Johnson
Pam Jones
Obadiah Smith
Alisa Wells

Finance Committee
Jonathon Cook

Jennifer Dudley
Kevin Eckerty
David Happe
Daniel Stallings

2023 VITA Volunteers

Paula Bivens
Teresa Cheatham
Kelsey Grogg
Janet Lawson
Susan McDuffee
Sharon McWilliams
Lynn Mellinger
Patricia Sample
Peggy Spracklin
Nancy Vaughan
Steve Vaughan
Kevin Veneskey

2023 Anderson University VITA Volunteers

Vanessa Tijerina
Owen Carmack
Quinn Dreiband
Cathy Garrison
Kourtnei Green
Johnathan Havener
Karlie Hutton
Carter Knoblauch
Loreal Leonard
Noah Linville
Abigail Miller
Areli Paz Labastida
Nicholas Robinson
Kenzie Schlagel
Lorraine Strong
Riley Tull
Frances Vance

READ United Volunteers

Andrea Meadows
Brad Meadows
Kathy Benz
Jeff Bleicher
Angela Davis
Amy Dauss
Cornelius and Mary
Dollison
Erin Hansen
Jeff Heavilon
Andrew Jones
Linda Pohly
Donna Polcz
Katelynn Pranger
David Renz
Holly Renz
Tania Said
Frank Scott
Kari Sisk
Laura Suman
Anna Vincel
Susan Volbrecht
Karen Williams
Kim Williams

Women United Volunteer Leaders

Carrie Barrett
Treva Bostic
Jennifer Gibson
Melissa Greer
Marisa Little
Angie Rogers-Howell

2023-2024 Board of Directors

Bekah Snyder Logan, Chair
Lundbeck

Obadiah Smith, Vice Chair
Air Force, Retired
Pendleton Correctional Facility

Jennifer Dudley, Treasurer
Cardinal CPA Group

Alisa Wells, Secretary
Ivy Tech

Matt Kelsey, Past Chair
DeFur Voran Law Firm

Treva Bostic
Anderson Community Schools

Greg Bramwell
Star Financial Bank

Kevin Eckerty
First Merchants Bank

Jennifer Gibson
Northwest Bank

Lee Ann Kwiatkowski
Muncie Community Schools

Katie Lash
East Central Educational Service Center

Betsy Mills
Henry County Council

Marianne Sprong
Community Hospital Anderson

Daniel Stallings
Financial Advisor

Tyrone Thomas
Schooley Mitchell

Rashida Willard
Ball State University

United Way Staff

Jenni Marsh
President & CEO

Karen Hemberger
Vice President Impact

Kim Williams
Vice President Resource
Development & Marketing

Laura Vise
Vice President Operations

Ashley Breedlove
Director of Learning Supports

C.S. Hendershot
Director of Grants & Development

Denise King
Director of Campaign & Donor Relations

Kim Rogers-Hatfield
Director of Community Resources

Annie Wood Bell
Director of Family Success

Holly Juip
Assistant Director Community Mobilization

Julie Barton
CKF Coalition Director

Mary Nicholson Tait
CKF Outreach & Enrollment Specialist
Women United Engagement Manager

Ruth Coffey
Gifts Processing Manager

TOP CORPORATE PARTNERS

United Way's work is possible due in large part to the partners who commit to volunteer, sponsor host a workplace campaigns, give a corporate gift, and provide in-kind donations.

Special thanks to our top 20 corporate partners who demonstrated their fierce commitment to United Way's mission by being a top contributor to the 2022 campaign.



**GEORGE AND FRANCES
BALL FOUNDATION**



**First Merchants
Bank**



**BALL STATE
UNIVERSITY**



**Community
Hospital Anderson**



Ball Brothers Foundation



Northwest



Boyce



**Unified
Group Services**

Harrahs
HOOSIER PARK

**RAYMOND
JAMES**



Ball Memorial Hospital



**ANDERSON
COMMUNITY SCHOOLS**



Shafer FOUNDATION
Hamer D. & Phyllis C. Shafer



WHITINGER & COMPANY LLC



**OPENDOOR
HEALTH SERVICES**

**W.R.
DUNKIN
& Son, Inc.**

AN ABEL FAMILY OF BUSINESSES



An **AEP** Company



**OLD
NATIONAL
BANK**

**GENERAL
TRUCK SALES**

MAGNA